

25 A GLASS PASSIVATED BRIDGE RECTIFIER

Reverse Voltage - 100 to 1200 V

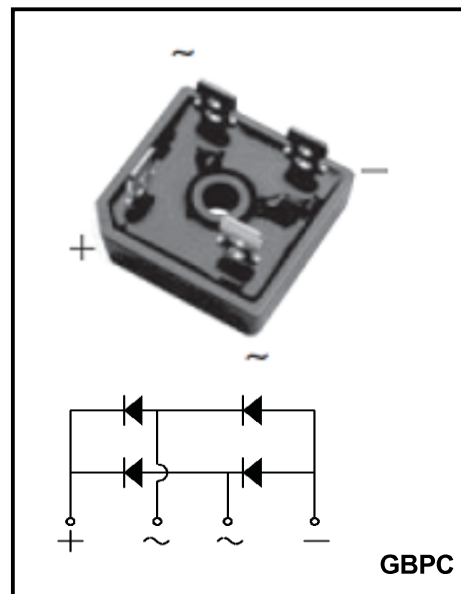
Forward Current – 25 A

FEATURES

- ◆ High current capability
- ◆ Low forward voltage drop
- ◆ Glass Passivated Chip Junction
- ◆ Low power loss, high efficiency
- ◆ Lead free in comply with EU RoHS 2011/65/EU directives

MECHANICAL DATA

- ◆ Case: GBPC
- ◆ Polarity: Symbol marked on body
- ◆ Mounting position: Any



Maximum Ratings and Electrical characteristics

Ratings at 25 °C ambient temperature unless otherwise specified.

Parameter	Symbols	GBPC 2501	GBPC 2502	GBPC 2504	GBPC 2506	GBPC 2508	GBPC 2510	GBPC 2512	Units
Maximum Repetitive Peak Reverse Voltage	V_{RRM}	100	200	400	600	800	1000	1200	V
Maximum RMS voltage	V_{RMS}	70	140	280	420	560	700	1140	V
Maximum DC Blocking Voltage	V_{DC}	100	200	400	600	800	1000	1200	V
Maximum Average Forward Rectified Current @Tc=55 °C	$I_{(AV)}$	25							A
Peak Forward Surge Current 8.3 ms Single Half Sine-Wave Superimposed on Rated Load (JEDEC method)	I_{FSM}	350							A
Forward Voltage per element @ $I_F=12.5A$ and 25°C	V_F	1.1							V
Maximum DC Reverse Current @Tj=25°C at Rated DC Blocking Voltage @Tj=125°C	I_R	5 500							μA
I^2t Rating for Fusing(3ms≤t≤8,3ms)	I^2t	508.4							A ² S
Operating and Storage Temperature Range	T_J, T_{stg}	-55 ~ +150							°C

(1) Measured at 1 MHz and applied reverse voltage of 4 V D.C

(2) Thermal Resistance Junction to Case, Lead and Ambient.

Ratings And Characteristic Curves

Fig. 1 - Forward Current Derating Curve

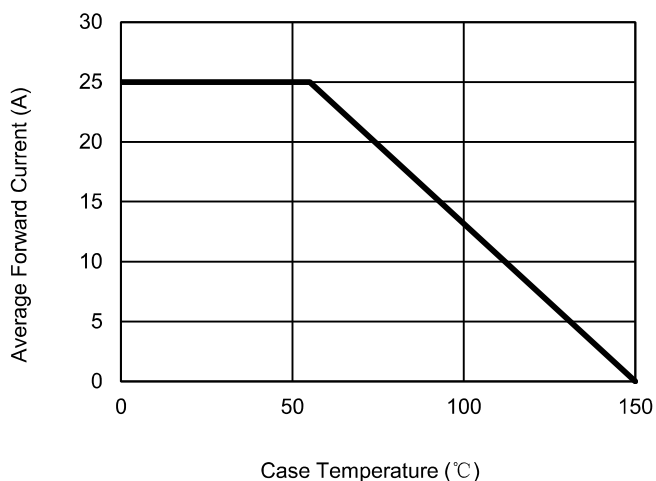


Fig. 2 - Maximum Non-Repetitive Surge Current

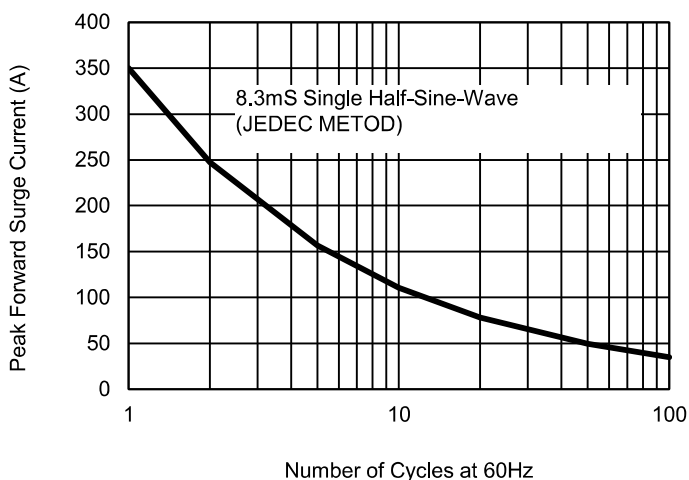


Fig. 3 - Typical Reverse Characteristics

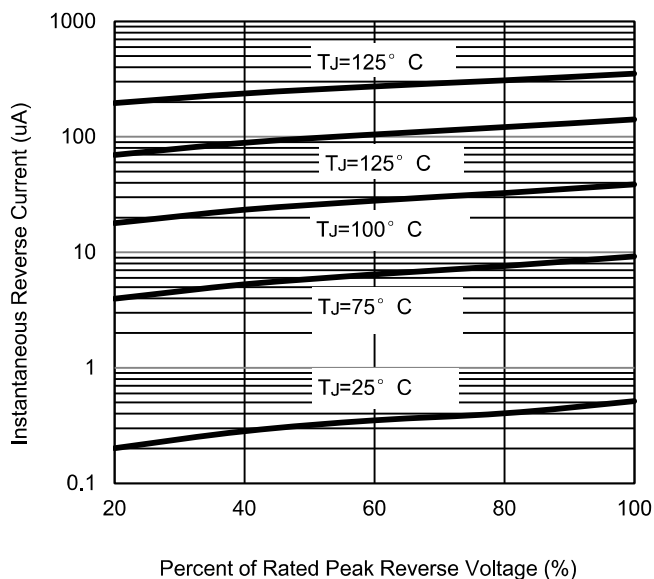
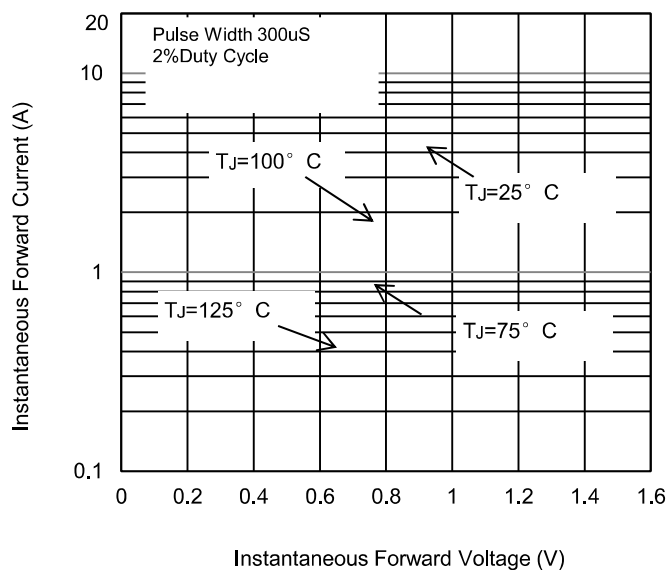
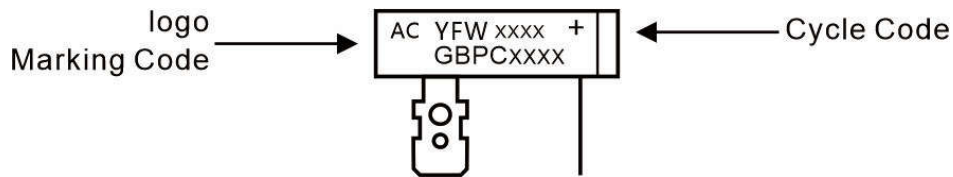


Fig. 4 - Typical Forward Characteristics



Marking Diagram



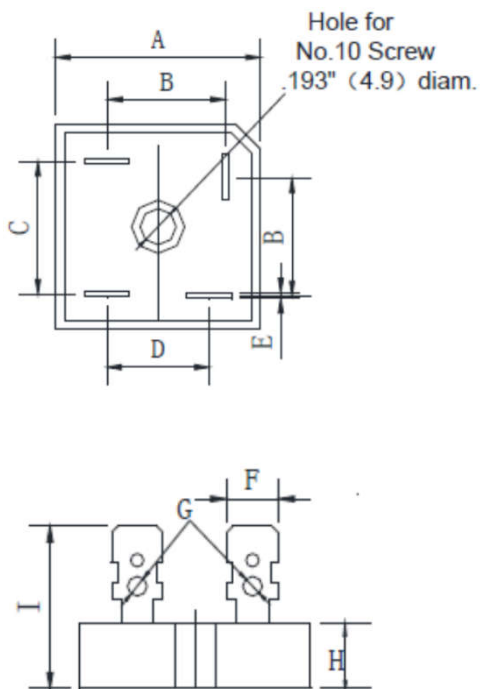
Ordering information

Package	Packing Description	Packing Quantity
GBPC	bulk	50PCS/Box 500PCS/Carton

Package Dimensions

GBPC

Dim.	Millimeter(mm)		Dimensions inInch	
	Min.	Max.	Min.	Max.
A	28.2	28.8	1.11	1.13
B	15.3	17.3	0.602	0.681
C	17.1	19.1	0.67	0.75
D	13.2	15.2	0.520	0.598
E	0.75	0.85	0.0295	0.0335
F	6.2	6.4	0.244	0.252
G	2.2	2.6	0.087	0.102
H	7.6	8.2	0.30	0.32
I	19	-	0.75	-



Disclaimer

The information presented in this document is for reference only. GuangDong Youfeng Microelectronics Co.,Ltd. reserves the right to make changes without notice for the specification of the products displayed herein to improve reliability, function or design or otherwise. The product listed herein is designed to be used with ordinary electronic equipment or devices, and not designed to be used with equipment or devices which require high level of reliability and the malfunction of which would directly endanger human life (such as medical instruments, transportation equipment, aerospace machinery, nuclear-reactor controllers, fuel controllers and other safety devices), YFW or anyone on its behalf, assumes no responsibility or liability for any damages resulting from such improper use of sale. This publication supersedes & replaces all information previously supplied. For additional information, please visit our website <https://www.yfwdiode.com>, or consult YFW sales office for further assistance.